



Leigh Court

Make it a time to remember

Make it a time to remember

In our experience, companies and individuals choose Leigh Court to hold their event for two main reasons. Firstly, because of its unique character, beautiful surrounding and stimulating atmosphere. And secondly, because the service they receive ensures that guests or delegates remember an event for all the right reasons.

A service that makes life easy

No one knows better how to make your occasion a resounding success than our Events Team. Our extensive knowledge and experience means we can really help you use Leigh Court, its facilities and surroundings, to make the most of your event – whether it's for business or pleasure. Everyone's different, so we aim to provide a professional service that's as personal and individual as you are. And on the day of your event, you can relax, safe in the knowledge that we're diligently working behind the scenes to make sure everything runs to plan.

A little about Leigh Court

Leigh Court is a Grade II* listed mansion house built in 1814 from Bath stone. Externally, it follows the graceful Palladian architectural style, while inside the bold Greek Revival style is complemented by striking 19th century décor. Throughout its history, Leigh Court has been, among other things, a family home and a hospital, and at one stage, housed paintings by Titian, Michelangelo, Rubens and Van Dyke. Nowadays, it offers serviced office space to local businesses and has become one of Bristol's premier venues for corporate and private events and weddings.

A little about GWE Business West

Leigh Court Events is now part of GWE Business West, the most influential business membership organisation in the West of England. Existing to ensure a vibrant economy for the area, it provides a valuable voice for business through the Initiative and Chamber of Commerce activity.

Members of GWE Business West benefit from a range of discounts on business services including Leigh Court venue hire, event management, international trade and training.

For further information on how to join us visit www.businesswest.co.uk

Everything you could want, and a service to match.



Corporate and private events

Choosing the right venue can make or break an event. Get it right and you have the foundations for a truly memorable occasion. At Leigh Court we can offer unique and impressive surroundings that will help create the atmosphere you want – whether it's excitement, creativity, celebration or discussion.

Leigh Court combines modern comfort with a truly classic setting, making it an outstanding venue. Depending on the needs, nature and size of your event, we have a variety of flexible function rooms available – with Broadband internet connection and the latest audio-visual equipment. For more information on the capacity of each, see our information pack.

We understand the needs of businesses and we take a creative approach to making your event that little bit more special. We're always ready to discuss any ideas or suggestions you have. We don't limit ourselves to hosting certain types of events, but here are some typical ones:

- Conferences, training, meetings and seminars – a great place to get on with business.
- Product launches – with easy access to the M5 and M4, test drives and car launches are especially

popular.

- Company fun days and BBQs – a grand place for a grand day out.
- Outdoor pursuits and team building days – 25 acres of parkland at your disposal and a host of activities on offer.
- Film shoots – a ready-built set for period or modern drama.
- Exhibitions and fashion shows – large, light, airy rooms perfect for exhibitions and catwalks.
- Banquets, balls and dinner dances – up to 400 inside and an unlimited number outside.
- Theatre, opera and music recitals – the perfect stage for performers and the audience.
- Birthdays, anniversaries and other special occasions.
- Celebrations of life and naming ceremonies – a very private occasion in a very private setting.
- Civil Partnership ceremonies and renewal of vows – a perfect backdrop for this most special celebration.

We also provide a wide choice of food and refreshments for delegates and guests including breakfast, lunch, afternoon tea and evening dinner – and an extensive wine list.

Making a pleasure of business and a business of pleasure.



The splendour of the Palladian architecture outside promises an equally striking interior.





The Great Hall's Greek Revival interior - a truly special place for a truly special day.

A very personal service

At Leigh Court you have the perfect backdrop for this most special celebration, with its peaceful, romantic setting and ornate and grand décor.

Every wedding is unique, so before we make any suggestions we'll get to know you better: Your likes and dislikes, the type of atmosphere you want to create – formal or informal, traditional or modern. Only when we fully understand your needs, will we work with you to create your unique wedding day. And ensure it runs smoothly from start to finish.

We have a licence to hold Civil Marriages, and the Great Hall, with its beautiful double staircase, creates a fantastic bridal entrance – especially when accompanied by our unique pipe organ.

Whether you're looking to hold just the ceremony, reception or evening party (or all three) at Leigh Court, you can hire a choice of suites or the whole ground floor depending on your needs and the number of guests. And of course, you can always take the indoors outside with a marquee in the grounds.

Our highly rated team of chefs, passionate about the food they create, have designed a choice of wedding menus that include silver-service wedding breakfasts, buffets, hog roasts and barbecues. Wherever possible, we source fresh fruit and vegetables from local suppliers. And we have an extensive wine cellar containing some of the finest bottles from around the world.

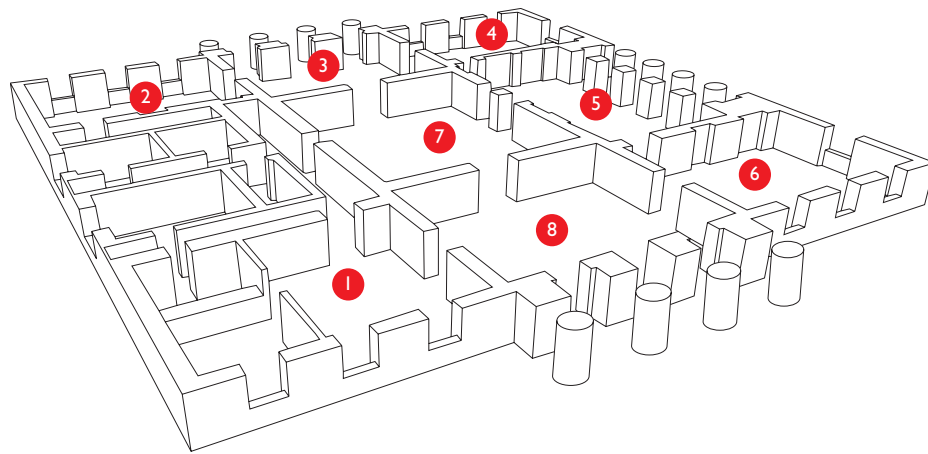
Whatever you decide, we're ready to offer help and advice to create your perfect wedding day.

We cater for all your personal and culinary needs. Whatever you want, just ask.



Room to plan

Depending on the needs, nature and size of your event, we have a variety of flexible and functional suites available. To find out more about the capacity of each, please refer to the information pack.



3 Salon



4 Tapestry Room



5 Library



6 Morning Room



1 Lounge



2 Drawing Room



7 Great Hall



8 Outer Hall

The Business Centre

Having the right address can make a significant difference to the image of a business. Leigh Court is a highly prestigious location - a Grade II* listed mansion with magnificent parkland views, conveniently located 3 Miles from M5 Jct. 19 with easy access to Bristol city centre.

Serviced offices

Offering fully serviced offices in the main house, space varies in size - suitable for between 2 and 12 people. Utilities and business rates are included in the monthly fee. A full range of services, such as franking and photocopying, can be tailored to your business needs.

Our businesses centre clients can also take advantage of on-site catering, as well as preferential rates for meeting room hire.

A range of business support services, such as mentoring, bespoke business training and export advice, is easily accessible with experts located on-site.

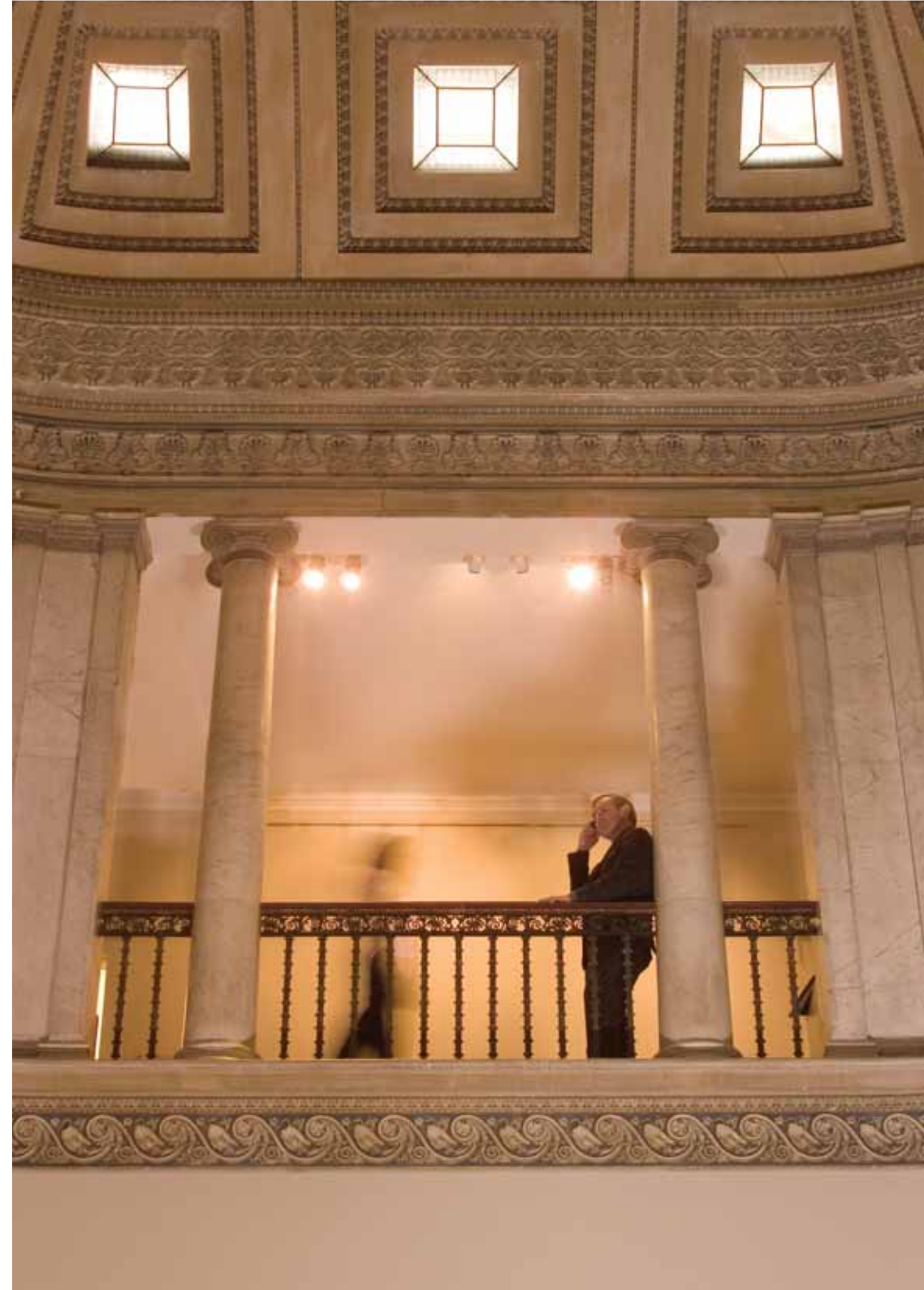
Making a pleasure of business and a business of pleasure.



Virtual office services

Avoid the high cost of purchasing or leasing, equipping and staffing business premises, but provide customers with a local telephone number and prestigious business centre address. Ensure that your business calls are professionally answered when you are not available. Have regular access to an impressive location in which to hold meetings.

For a nominal monthly fee (packages start at £80 plus VAT per month), a virtual office at Leigh Court Business Centre will provide you with the prestigious address, a perceived presence in the Bristol area and a range of support services - such as a dedicated direct dial number; telephone answering, post forwarding and monthly use of a meeting room - without having to let a physical office.



Finding us and getting in touch

The map below shows just how well Leigh Court is situated. For example:

- Junction 19, M5 – 2 miles on the A369
- Clifton Suspension Bridge – 2 miles
- Bristol city centre – 3 miles
- Bristol Temple Meads train station – 15 minute taxi ride
- Bristol International Airport – 8 miles

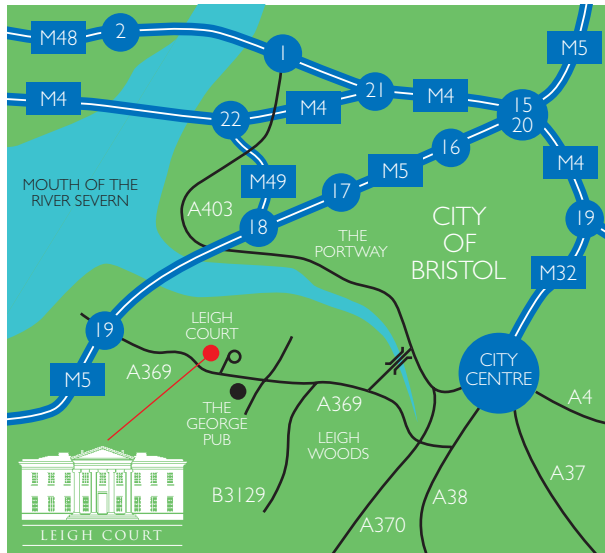
To find out more information about how we can help you host your event at Leigh Court:

Tel: 01275 373 393

Fax: 01275 370 706

Email: enquiry@leighcourt.co.uk

You can also find out more at www.leighcourt.co.uk



Make it a time to remember



Leigh Court Events, GWE Business West, Leigh Court Business Centre, Abbots Leigh, Bristol, BS8 3RA

Tel: 01275 373 393 • Fax: 01275 370 706

Email: enquiry@leighcourt.co.uk • www.leighcourt.co.uk